



**SRE-Solutions.com**

by Rossmann-Engineering

## Project Details

Project details:

- Installed capacity 1.8 GW
- 1300 Solar assets in 8 countries



## IoT Use Case: Monitoring and Control of Solar Energy installations

### Key features:

- Fully customizable IoT platform based on Thingsboard, capability for hundreds of Devices
- Values are stored in a Database, historical values can be shown for anytime in the past for troubleshooting
- Live Dashboard view, values refresh without page reload
- Low running cost (Server instance: 20-50 € / Month)
- Low payload size to keep data transfer low
- All calculations and Data logging functions are done on server side
- Industry approved Gateway to Transfer values from the field into the cloud
- In-house development of a gateway application available as open source, fully configurable via web server without programming knowledge
- Support of multiple protocols
- Comfortable Data overview via Collibellex mobile app available in Apple App store and Google Play store
- Server hosted in Europe
- Hourly or Daily reports via mail with Trace View



**SRE-Solutions.com**  
by Rossmann-Engineering

# Network Infrastructure and cost overview

Total estimated cost:

One time invest (per site):

Compulab IoT Gateway 140,00 €

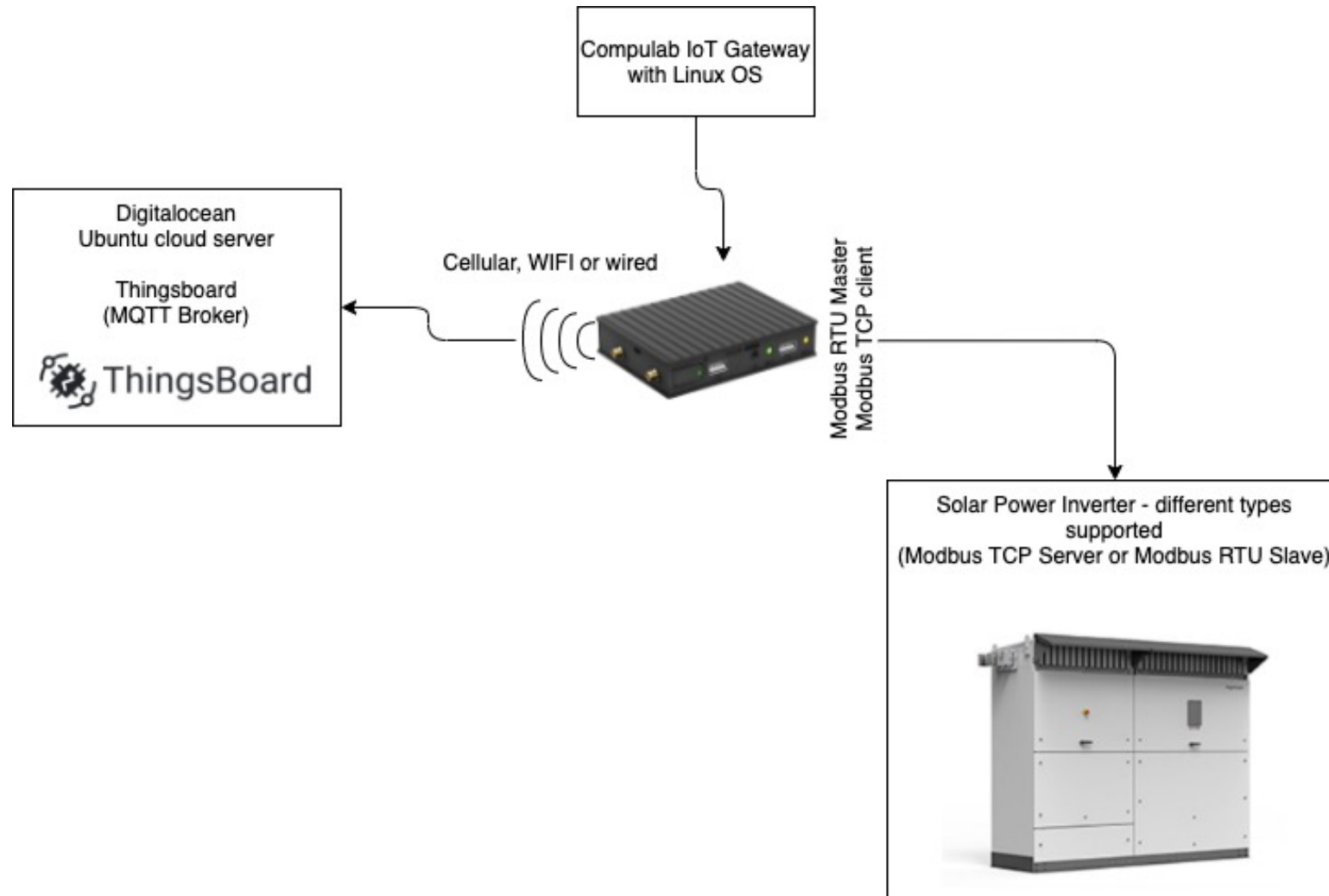
Monthly Running cost:

SIM-Card 3GB / Month 10,00 €

Digitalocean Ubuntu Server 24,00 €

Licensing cost

None





**SRE-Solutions.com**  
by Rossmann-Engineering

# Open Source IoT Gateway application, industry approved

## IoT Gateway Application:

- In house development
- Available as open-source
- Industry approved in hundreds of applications
- Supports multiple protocols  
(Modbus-TCP, Modbus-RTU, Bacnet, Ethernet/IP, EnOcean)

Select Read-Order: Total AC Energy

Name	Total AC Energy
Active	True
Transport-ID	1
Absolute Threshold	0
Relative Threshold	
Data Area	Input Register
Registerintervaltime	1
Multiplefactor	1
Signed	False
Bits	32
Address	5

Home Config Import/Export Connectivity GW Advance Configuration Modbus configuration Show log Latest Readings

**Latest readings**

Tag name	Value
Total AC Energy	8328
Hours up and running	15978
Inverter Alarms	0
DC input voltage	734
Average input current estimation	0
Grid RMS Voltage, phase 1	237
Grid RMS Voltage, phase 2	237
Grid RMS Voltage, phase 3	237
Grid RMS Current, phase 1	0
Grid RMS Current, phase 2	0
Grid RMS Current, phase 3	0
Cos Phi	0.0
Active Power	0.0
Energy Resetable Counter	28541.4

Home Config Import/Export Connectivity GW Advance Configuration Modbus configuration Show log Latest Readings

**Connection status**

IP-Address eth0	192.168.17.251
Subnet-mask eth0	255.255.255.0
IP-Address eth1	
Subnet-mask eth1	

**VPN status**

Connection status	disconnected
IP-Address	172.28.62.124
Subnet mask	255.255.0.0
Version	1.6.4
Node ID	fe70b7ec50
Network-ID	error
Network-Name	error

Connect VPN

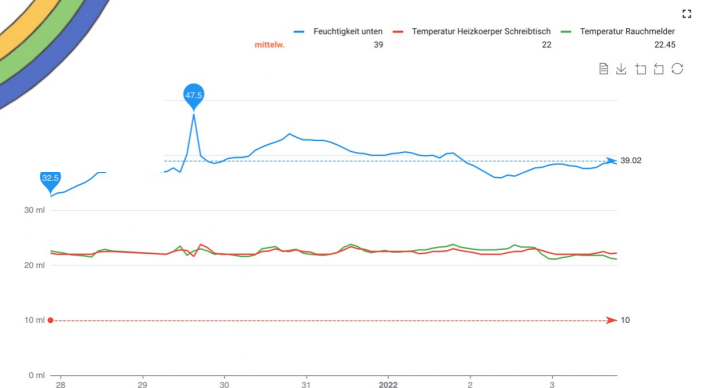
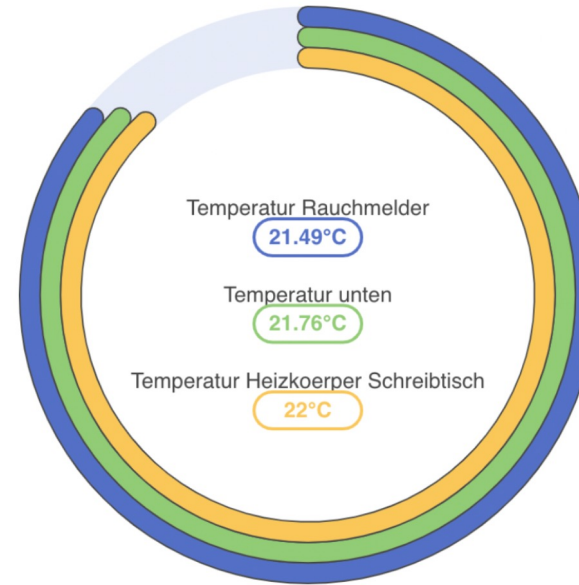
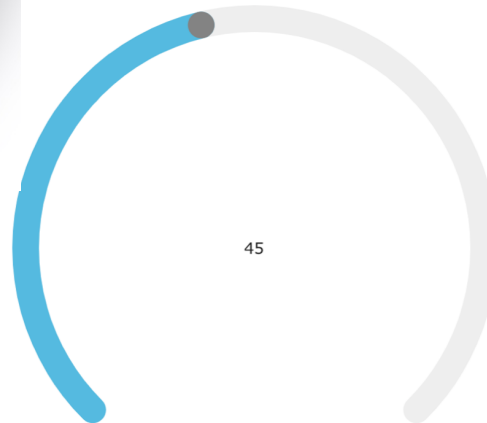


**SRE-Solutions.com**  
by Rossmann-Engineering

# Open Source Widget development on demand

open-source widget library for Thingsboard

<https://github.com/rossmann-engineering/Collibellex-Thingsboard-Widgets>



- Fully Customized Login Screen
- User Management for Customer Users and Tenant Administrators

Benutzername (E-Mail) \*

Ungültiges E-Mail Format.

Passwort

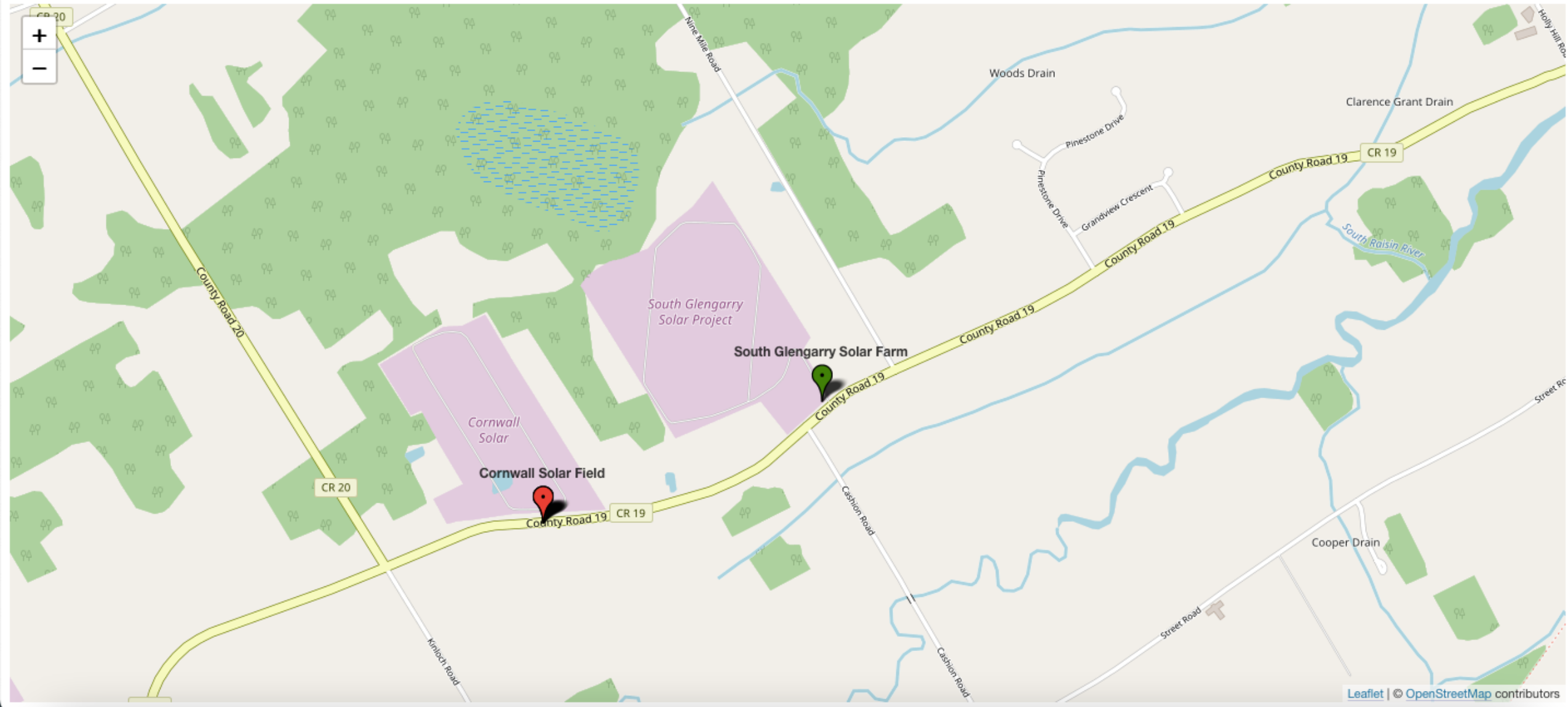
Passwort vergessen?

Anmelden

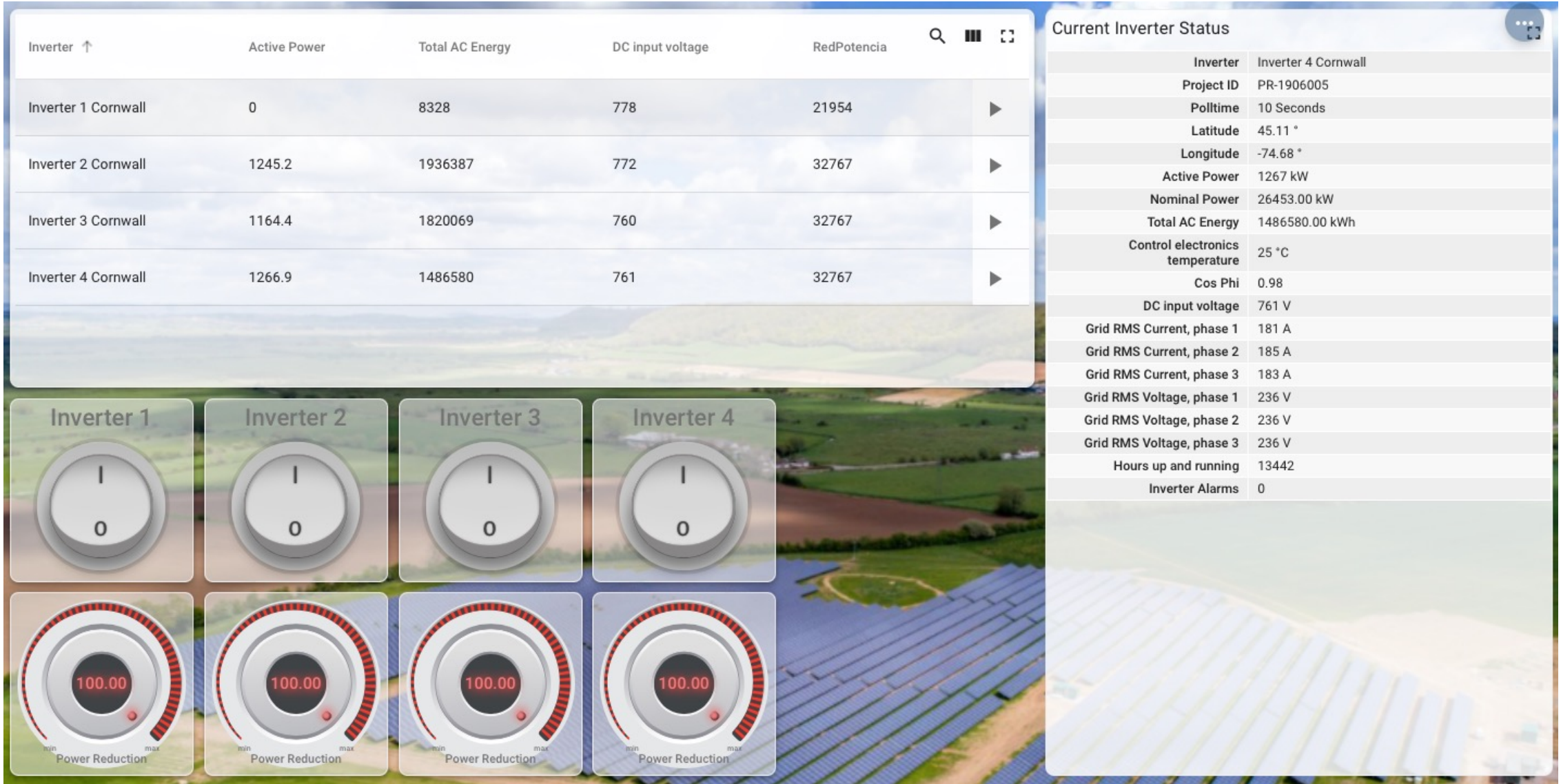


# Overview showing all available devices (depending on the user permissions) Map view and list view with most important values

Asset Overview

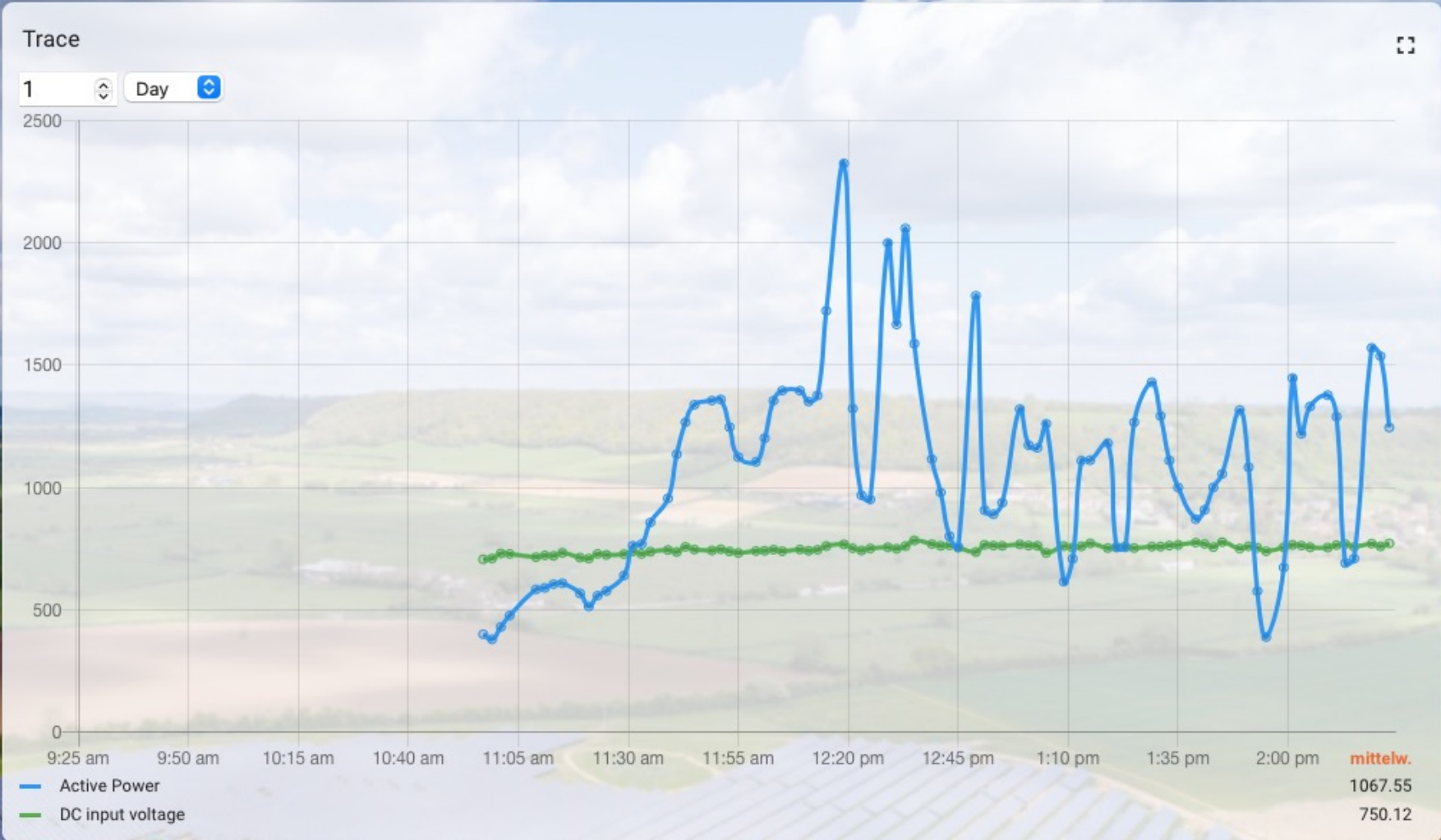
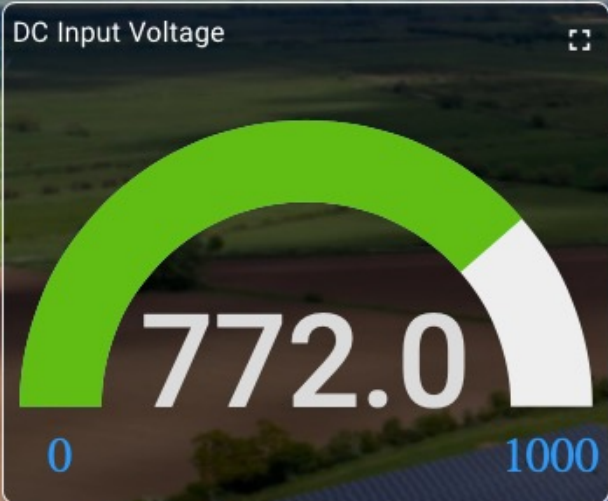
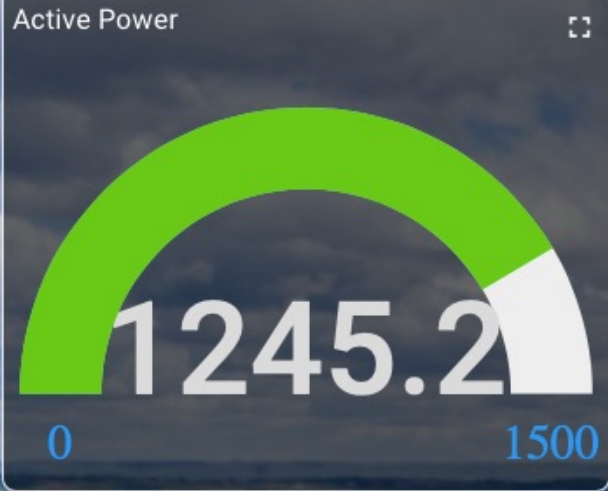


# Dashboard overview for the selected site showing all relevant latest values and control elements





# Historical Values for the selected inverter





## Access via Collibellex-App – Fully customizable

2:04

< Add Device

Device ID/Name: 4e0f4a60-f9d4-11eb-b636-1E

Alias: Irrigation System 1

Background Picture: [Choose Picture](#)

---

telemetries

Value: temperature

Alias: Temperature

Measurement unit: °C

Icon:[optional]

Default Interval: 1 month

Color: [Choose Color](#)

Show the value in the overview screen